



# ***Exploding The Phone***

db791

www.explodingthephone.com

Bibliographic Cover Sheet

Title           **Blue Box Scheme Trials Scheduled**

Publication    *The Fresno Bee*

Date            1978-03-19

Abstract       Trials are scheduled for Wyatt Leon Mimms and Mac Reber on charges of using a blue box to defraud Pacific Telephone Co. Both plead innocent to grand jury indictments.

Keywords      Wyatt Leon Mimms; Mac Reber; Alan D. Christensen (U.S. Magistrate); Blue Box; Pacific Telephone Co.

Source         Newspaper Archive

*The following pages may contain copyrighted material. We believe that our use of this material for non-commercial educational and research purposes constitutes "fair use" under Section 107 of U.S. Copyright Law. If you wish to use this material for purposes that go beyond "fair use," you must obtain permission from the copyright owner, if any. While it will make us slightly sad to do so, we will nonetheless comply with requests from copyright owners who want their material removed from our web site.*

## US Suit Filed In Cattle Sales

Penalties totalling \$4,725 are being sought in a lawsuit brought by the federal government against John L. Benevides and Joe Espindula Jr. of Tulare for allegedly engaging in business as cattle dealers without registering with the U.S. Department of Agriculture.

The pair, partners in the B & A Cattle Company Dairies, also are accused of failing to furnish a bond as required by law.

An injunction enjoining the pair from doing business as cattle dealers within the Packers and Stockyards Act of 1921 without registration and a bond also is sought.

It is alleged they purchased cattle in Tulare and Hanford sales yards and sold cattle in Tulare and in Ontario in Los Angeles County during 1976 and 1977.

## School Unification Meeting Scheduled

AVENAL — Unification of Avenal High School with Avenal and Kettleman City Elementary Schools will be further considered Tuesday at 7:30 p.m. in the Kings County Schools office in Hanford by the county Districting Committee.

At present Avenal High is part of the Lemoore Union High School District and the two elementary schools make up the Reef-Sunset Union School District.

Residents in the Avenal and Kettleman City area have requested the study and possible separation.

The new district would have an enrollment of about 1,240 and meet state criteria for community identity.

A problem to be resolved is that at present the high school district spends about \$2,520 per pupil per year in Avenal and \$1,516 in Lemoore. This is because of the different sizes of the two schools and the added cost of maintaining a full program in the smaller school.

## Blue Box Scheme Trials Scheduled

Jury trials are scheduled for June 13 in U.S. District Court for Wyatt Leon Mimms and Mac Reber, both of Fresno, on charges of using an electronic device known as a blue box to defraud the Pacific Telephone Co. of payments for long distance calls.

Mimms and Reber both pleaded innocent before U.S. Magistrate Alan D. Christensen to Grand Jury indictments alleging they schemed to defraud the telephone company.

Mimms is alleged to have made a long distance call to Honolulu from Fresno on Feb. 7, using a multi-frequency signal generator or blue box to avoid payment for the call.

Reber is alleged to have made a phone call to Cresco, Iowa, on Jan. 18, using a blue box to avoid long distance toll rates being charged to his account.

## Hearings Will Air Milk District Shifts

SACRAMENTO — The state will hold hearings next month to consider moving western Merced County and the Newman area of Stanislaus County from one milk-marketing area to another.

Currently, that portion of the San Joaquin Valley is in the North Valley Marketing Area. The state Department of Food and Agriculture is being asked to move it into the South Valley Marketing Area, where the price of milk is lower, so that the handlers can continue to compete for markets in the San Francisco Bay Area.

The department has called hearings for April 11 in the auditorium of the Employment Development Department in Sacramento and for April 13 in the State Building in Fresno. Both hearings will start at 9:30 a.m.

## ACTION Recruit Team Will Visit

Two representatives of ACTION will be in Fresno April 18-19 to recruit volunteers for the program's Peace Corps and VISTA projects.

Bill Gerlach and Gene Rigler of the program's San Francisco regional office will visit the Fresno State University campus to conduct the recruiting.

ACTION is conducting a month-long campaign throughout the nation to inform the public of a new thrust in the agency's international and domestic programs and new opportunities offered for volunteer service.

A news release from the national headquarters in Washington, D.C., said the new thrust is being directed toward persons who may not realize volunteer service is open to them: minorities, older persons, blue collar workers and the handicapped.

ACTION will screen 2,500 candidates for openings in Africa, Asia, Latin America and the Pacific. The press release said nearly 6,900 Peace Corps volunteers are serving in 63 developing countries.

The VISTA project recruits volunteers for aiding low-income persons in the United States to become self-sufficient.

## Local Politics

C. Thomas Whit, candidate for Public Administrator-Coroner, has named Karl Weiler as his campaign chairman.

Penny Raven, a Democratic candidate for lieutenant governor, will be honored at a \$5 per person fund-raiser Monday from 5:30 to 7 p.m. at the Circle K Skate Ranch. Tickets are available by calling 233-2615 or 486-1710 and at the door.

Jack Bray, candidate for Fresno County Superintendent of Schools, will be honored at a \$7.50 per person brunch Sunday, April 2, from noon to 3 p.m. at the John Rosenfeld home at 129 S. Kings Dr. in Reedley. Reservations can be made by calling 485-0411.

GOTTSCHALK'S

## THE STROLLER

brings  
you  
jacket  
dressing  
for  
Spring...



above...  
MINI-LEAF PRINT IN  
FORTREL POLYESTER

Add it to your wardrobe and see how beautifully it matches your life-style. You'll love the border print and the soft, soft colors. Made with attention to detail in Fortrel polyester knit, so it's unsurpassed for ease of care. The button-front jacket and square-yoke dress made the perfect pair. In blue or green, sizes 10-20 and 12½-22½.

48<sup>00</sup>

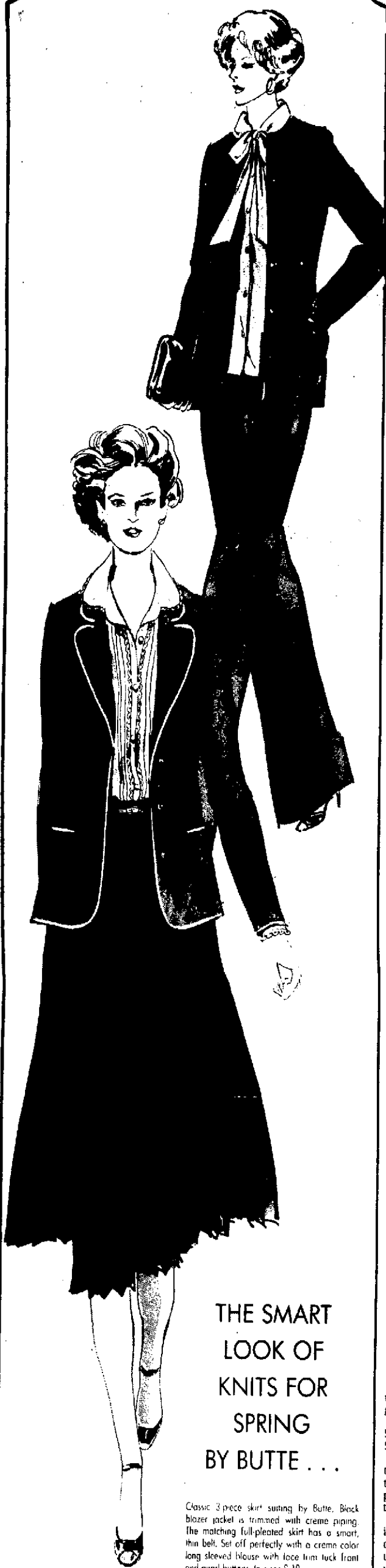
left...  
JACKET DRESSING  
IN A FERN PRINT

Anytime...anyplace...this little duet gives you a charming outfit. The Stroller puts it together with little extra details, like the new cape sleeves on the jacket and a smart piped yoke on the dress. Of Fortrel polyester, so it feels marvelous and needs only a minimum of care. In blue or green, sizes 10-20 and 12½-22½.

46<sup>00</sup>

GOTTSCHALK'S BUDGET DRESSES (9-33)

ALL 6 STORES



THE SMART  
LOOK OF  
KNITS FOR  
SPRING  
BY BUTTE...

Classic 3 piece skirt suiting by Butte. Black blazer jacket is trimmed with creme piping. The matching full-pleated skirt has a smart, thin belt. Set off perfectly with a creme color long sleeved blouse with lace trim tuck front and pearl buttons. In sizes 8-18.

88<sup>00</sup>

The go-everywhere pantsuit that fits like a dream. Smart 3 piece styling of cape knit long sleeve corset jacket features stitched detail, front pockets and has matching cami. Beautiful sheer creme blouse accented with soft ruffled neck. In navy, sizes 10-18.

92<sup>00</sup>

GOTTSCHALK'S BUTTE KNITS (60) ... ALL 6 STORES

GOTTSCHALK'S